

Grinnell Twilight Criterium~August 8th
Hosted by Bikes to You/World of Bikes racing team

Held Under USCF permit # 2009-919

The course is located in beautiful downtown Grinnell. It is approximately one kilometer in length and is 'L' shaped with six turns. See the map on back...

pre-register using standard USAC entry sent to address below by 7/31/09 (postmarked)

\$3,100 prize list!!!

Categories, registration fee, start times, distance & corresponding prize lists below:

Junior's*

\$18 entry fee, 4 p.m., 30 min. +3 laps, & Merchandise Prizes for 5 places.

Master's 40 plus*

\$25 entry fee, 4:45 p.m., 30 min. +3 laps, & \$340 for 5 places.

Women's 4*

\$25 entry fee, 5:30 p.m., 30 min. +3 laps, & \$340 for 5 places.

Women's 1, 2 & 3*

\$30 entry fee, 5:30 p.m., 30 min. +3 laps, & \$980 for 10 places.

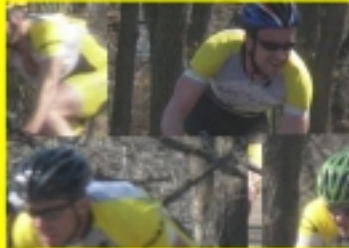
Men's 4 & 5*

\$25 entry fee, 6:15 p.m., 30 min. +3 laps, & \$340 for 5 places.

Men's 1, 2 & 3*

\$30 entry fee, 7:30 p.m., 1 hour +3 laps, & \$1100 for 10 places.

*Primes from the crowd and local businesses.



Send your registration & entry fee to...

*Bikes To You
921 Broad St
Grinnell, Iowa 50112*

Contact: Sean Walker 641-236-8600 or wsean3@gmail.com

Sponsors

www.grinnellbank.com



Directions from Des Moines to Grinnell
Take the I-80 E toward DAVENPORT.

0.1 mi

2: Merge onto I-80 E
toward DAVENPORT. 44.5 mi

3: Merge onto IA-146 N via EXIT 182
toward GRINNELL/NEW SHARON. 3.7 mi

4: Turn RIGHT onto 4TH AVE. 0.2 mi

5: Turn LEFT onto BROAD ST. 0.0 mi

Proposed Grinnell Detention Course approx. 35 mi

